

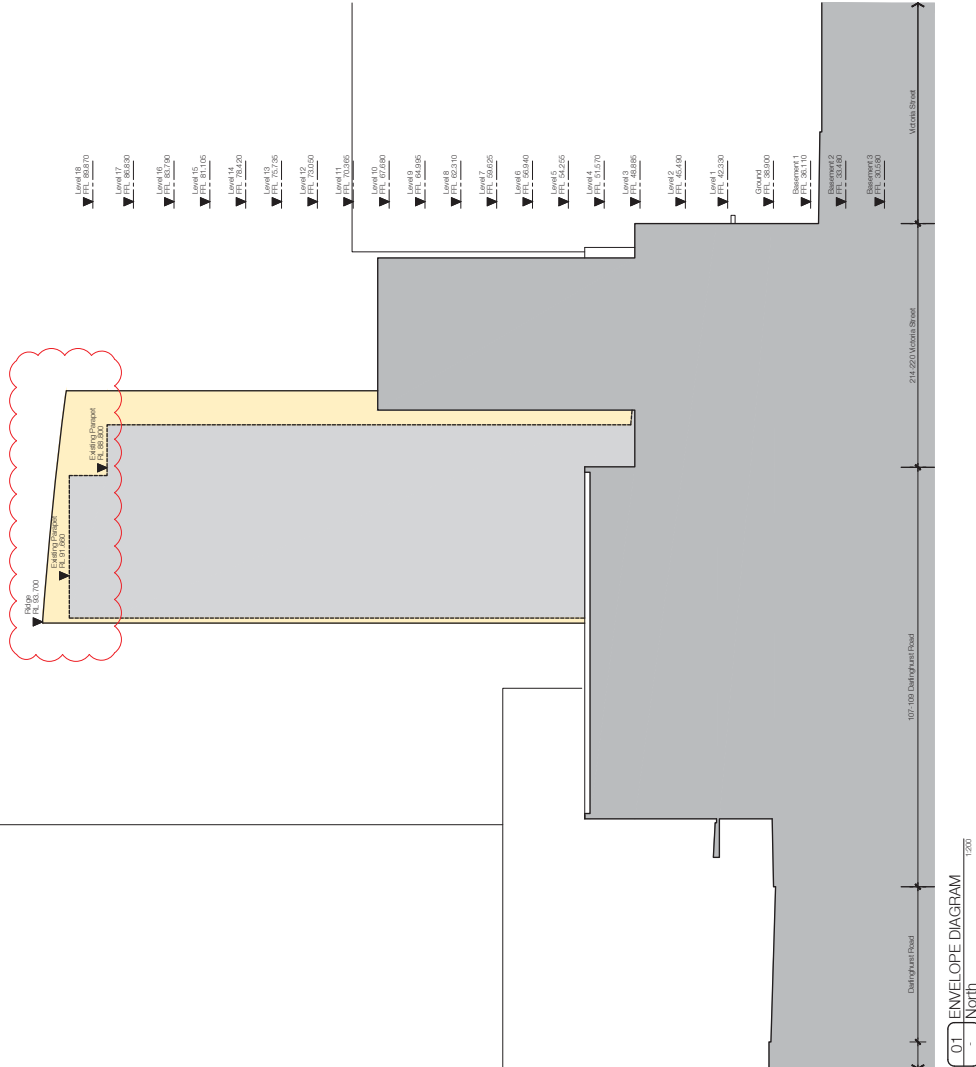
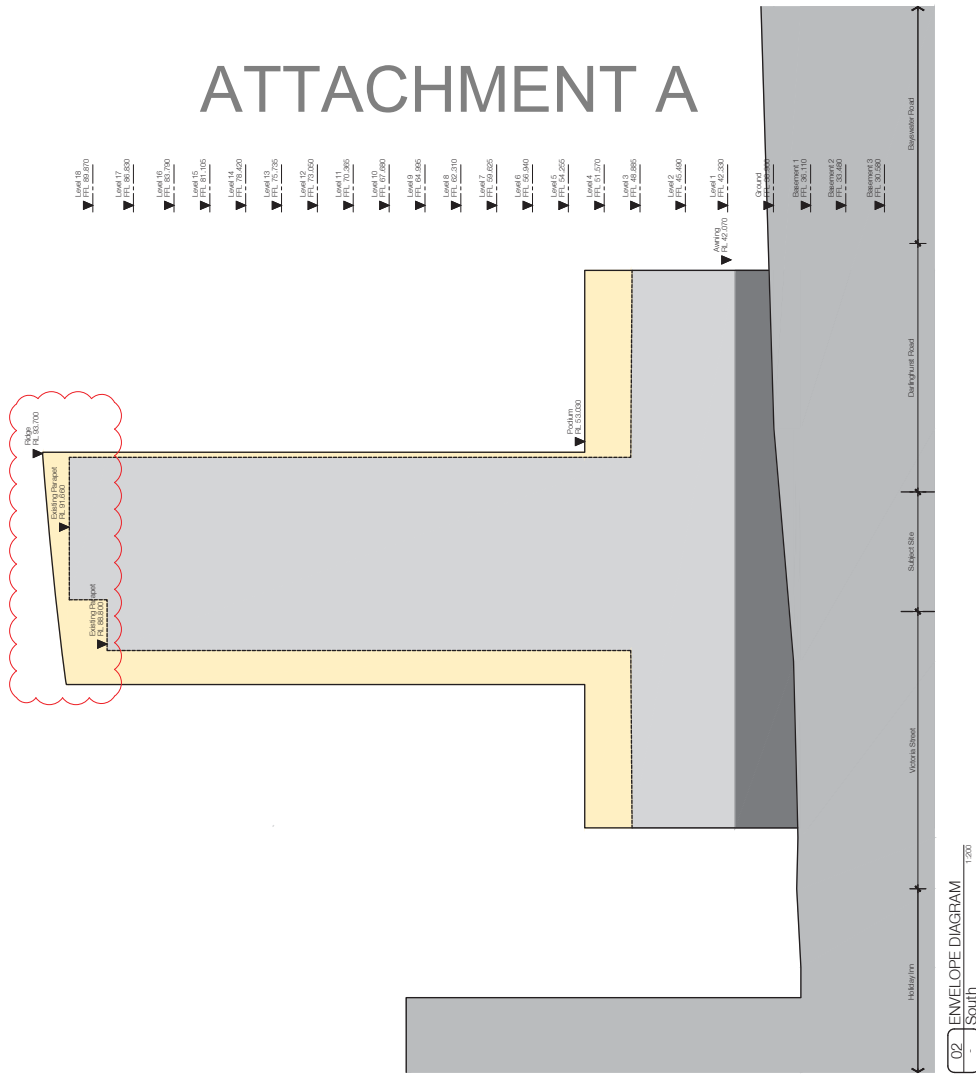
ATTACHMENT A

## **ATTACHMENT A**

**PROPOSED ENVELOPE DIAGRAMS**

**111-139 DARLINGHURST ROAD  
POTTS POINT**

# ATTACHMENT A



01 ENVELOPE DIAGRAM  
- NORTH  
1:200

02 ENVELOPE DIAGRAM  
- SOUTH  
1:200

Rev.	Date	Revision	By	CHK.	Rev.	Date	Revision	By	CHK.
02	20.10.13	ISSUED FOR PERMIT	CP	AT					
03	24.06.14	DARLINGHURST ROAD	CP	AT					

Rev.	Date	Revision	By	CHK.
02	20.10.13	ISSUED FOR PERMIT	CP	AT
03	24.06.14	DARLINGHURST ROAD	CP	AT

Project	Date	Scale	Sheet Size
Mixed Use Development 111 Darlinghurst Road Potts Point	24.06.2014	1:200	@ A1

Drawn	Checked	Drawn No.	Checked No.
CP	AT	4932	A-2911 / 03

Author	Drawn	Checked
John Thorne	John Thorne	John Thorne

FOR APPROVAL

1. Authority for this plan is given by the relevant legislation and the provisions of the relevant planning instruments. It is the responsibility of the applicant to ensure that the plan complies with all applicable laws and regulations. The Council is not responsible for any errors or omissions in this plan. The Council is not responsible for any consequences arising from the use of this plan. The Council is not responsible for any damage or loss resulting from the use of this plan. The Council is not responsible for any liability arising from the use of this plan. The Council is not responsible for any costs or charges incurred in connection with the use of this plan. The Council is not responsible for any other matters relating to the use of this plan.



Level 2  
400 Crown Street  
2011 Australia  
F 61 2 8200 9222  
www.jtb.com.au





